

NW 1/4
SECTION 8, T.6N., R.2W., S.L.B. & M.

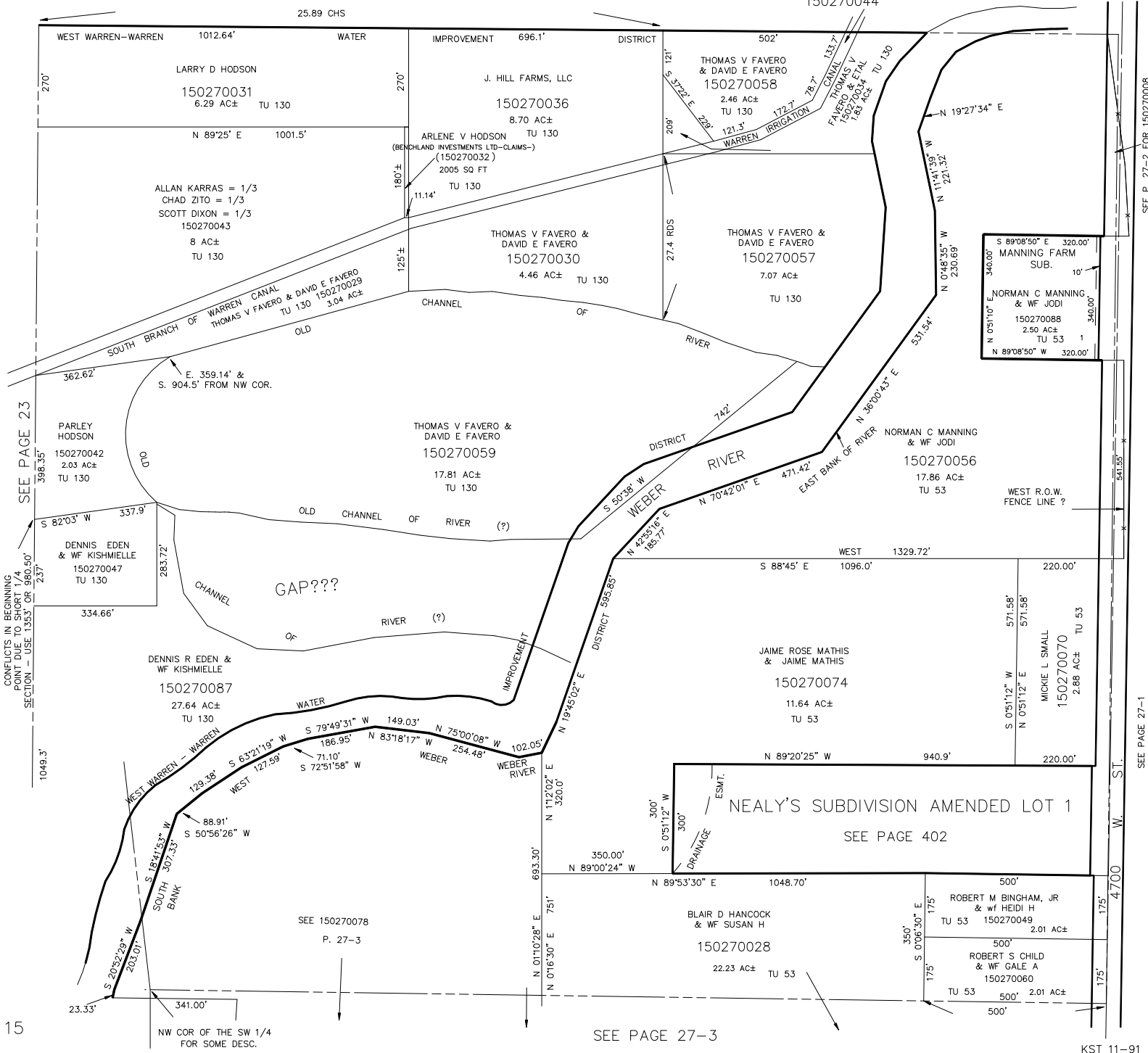
27-4

IN WEBER COUNTY

SCALE 1" = 200'

TAXING UNIT: 53, 130

SEE PAGE 17



SEE PAGE 23

CONFLICTS IN BEGINNING POINT DUE TO SHORT 1/4 SECTION - USE 135.3' OR 960.50' SECTION

15

SEE PAGE 27-3

SEE PAGE 27-2 FOR 150270008

SEE PAGE 27-1

KST 11-91